



# enteo v6 INVENTORY

## More Transparency Through Reliable Inventory Taking

When looking to cut costs in IT management, all roads lead to standardization and optimized license management. To make informed decisions here, IT administrators require up-to-date, complete and, in particular, reliable information about the hardware and software their company has installed. A detailed inventory of IT assets is therefore one of the main challenges confronting a company – especially when dealing with complex networks comprising multiple branches, home offices and field staff.

Only fully automated coverage of all networked and non-networked systems can ensure that all hardware and software are identified and catalogued with sufficient precision and at a reasonable cost. Getting the overall picture quickly requires that there are options for targeted database queries to cover all pertinent questions. IT administrators rely on this information to make correct decisions on hardware and software purchases. Quick identification of security-critical applications in the network, of the sources of errors encountered by users – resulting from faulty configuration or insufficient system capacity – is vital in order to be able to take effective remedial action.

### Complete Coverage and Correct Identification

The patented recognition technology employed by enteo v6 Inventory and the monthly updated product catalog containing more than 45,000 products guarantee that enteo v6 Inventory correctly identifies even the latest hardware and software components. In-house software can also be added to the product catalog. Different solutions are sorted into standardized hardware and software categories and thus rendered transparent. A similarly standardized producer overview provides reliable access to all of a producer's products.

enteo v6 Inventory also provides full information on mobile users and distributed locations. Mobile device data is automatically transferred upon establishing a connection to the company network. Besides Windows servers and clients,

### Key Benefits of enteo v6 Inventory

- Constantly updated information on hardware and software
- Coverage of central and distributed IT assets
- Optimal basis for standardization, strategic sourcing and license management
- Detailed information facilitates quicker troubleshooting
- Helpdesk first-call resolution rates increase significantly
- Seamless integration in existing desktops and server management
- Easy integration in helpdesk solutions

enteo v6 Inventory recognizes Linux/Unix and Netware machines as well as printers, switches, routers and external USB devices. For Windows servers, additional information is displayed about the role of the server, such as Citrix server, file server, Exchange server, etc.

enteo v6 Inventory automatically identifies virtual machines (guest systems) on the basis of VMWare and MS Virtual PC and displays them in the enteo v6 Inventory console. It also pulls in any asset properties such as serial and inventory numbers and cost centers.

### Viewing Current Status and History

You can perform inventory queries using the enteo v6 Inventory web console. The query-oriented approach means that it takes only 5 mouse clicks for 90% of your questions to be answered. Straightforward navigational elements and drilling down help you refine the result and represent it in the required format. This means, for instance, that you can quickly check hardware requirements for a migration project.

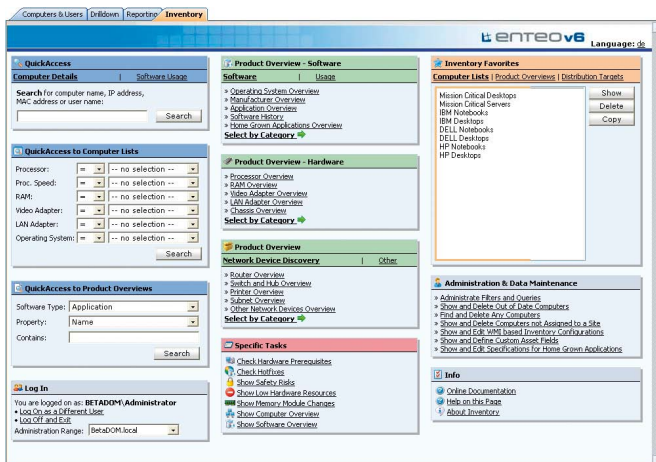
# enteo v6 INVENTORY

enteo v6 Inventory does not just provide up-to-date inventory data, but also chronicles changes made to hardware and software in a history. This ensures that IT administrators are immediately informed if memory modules or other hardware components are removed from systems. The enteo v6 history function also includes time-stamped information that makes it easy to keep track of when software was installed or uninstalled.

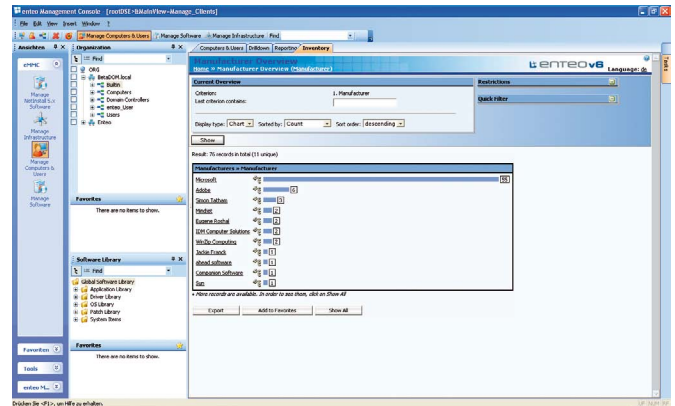
## Identifying Unused Software

All company networks contain installed software that is not used. An optional module is available for enteo v6 Inventory to enable IT administrators to identify and target this cost factor. The enteo v6 Usage AddOn displays software that has not been started over a specified time period and can thus be uninstalled.

Furthermore, it is easy to create detailed global reports on the applications used most or least across the whole company. The enteo v6 Usage AddOn is especially effective for saving costs when used in combination with enteo v6 License Management, enabling you to free up licenses not in use.



Don't just search – find: Easier access to important information



Patented recognition technology for correct asset and license management

## Key Features

- Patented recognition technology
- Includes product database updated on a monthly basis
- Automatic identification of security-critical applications
- Query-oriented web interface
- Definition of query results as distribution target groups for enteo v6 NetInstall
- Displays Linux, Unix and Netware computers as well as printers, switches and routers together with relevant information
- Identifies virtual machines (VMWare and MS Virtual PC)
- Captures and evaluates properties such as serial numbers and cost centers
- Intuitive interface oriented to user roles and tasks
- Add home-grown software using a wizard
- Special reports on hardware configuration
- Automatic indication of insufficient hardware resources in critical systems

### System Requirements:

enteo v6 NetInstall

### Clients:

Windows 2000, Windows XP, Windows 2003

### Server:

Windows 2000, Windows 2003, IIS 5.0 and higher  
DBMS MSDE 2000, MS SQL 2000, Oracle version 9i and higher

### Server hardware:

Requirements match that of the DBMS used

### Client hardware:

at least Pentium class, 32 MB RAM

## enteo Software

Germany	+49 711 340 190 0	sales@enteo.com
Alps Region	+41 43 388 40 90	sales.ch@enteo.com
Nordic Region	+46 8 555 409 40	sales.se@enteo.com
UK and Ireland Region	+44 20 7397 8390	sales.uk@enteo.com
North America	+1 847 706 9400	sales.us@enteo.com

Please go to [www.enteo.com](http://www.enteo.com) for more information.