



# enteo v6 PATCH MANAGEMENT

## Improved Security and Cost Effectiveness Through Transparent Patch Management

Attacks in the form of hacking and malware occur on a daily basis and can lead to considerable economical damage for a company. Even unsuccessful break-in attempts can often cause critical systems and applications to malfunction or overload given bandwidths, resulting in a complete system shutdown. The offenders focus on targeting well-known weak points of operating systems and applications. According to an independent study conducted by Gartner, about 50 such security vulnerabilities are discovered each week.

In order to protect against potential harm in the most efficient and cost-effective way possible, companies need a centralized, automated and constantly updated patch management. Before the patch is installed, it needs to be determined if it is relevant for the company and whether any dependencies or incompatibilities exist. A clear picture of the security issues and reliable proof of security compliance are imperative to satisfy internal and legal demands – even in complex and shared networks. However, this entire process must not slow down the response time, as speed is of the essence when installing new patches.

### Automated Security Scan and Patch Download

enteo v6 automatically searches the entire software environment for weak points, so that IT administrators always have an overview of the threat situation. enteo v6 Patch Management lets you see all new patches from Microsoft at a glance and if changes were made to patches already released. enteo v6 Patch Management enables you to select the necessary patches either from a local WSUS server or directly from the Microsoft Update website.

The patch can be selected based on priority and the operating systems, service packs, applications and language selection programs actually installed in the company network. An info text provides you with information on troubleshooting as well as the direct link to the Microsoft Knowledge Base.

### Key Benefits of enteo v6 Patch Management

- Automation of all patch management stages
- Better security thanks to automatic detection of weak points
- Reliable, rule-based rollout
- Quicker reaction to threats
- Flexible customization according to the needs of the company
- Reduced effort due to the selection of relevant patches and automatic downloads
- Integrated quality control ensures higher stability
- Improved efficiency through integration in enteo v6 software lifecycle management.

### Rule-Based Installation

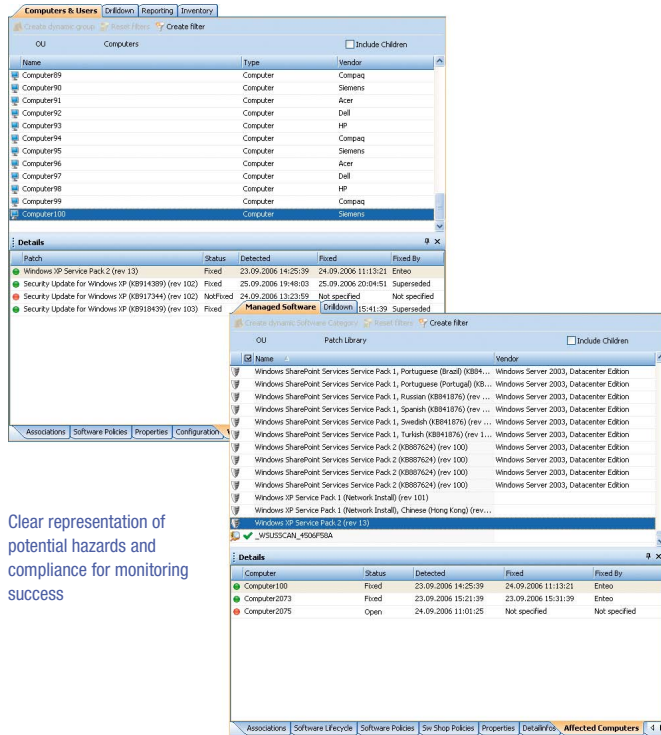
enteo v6 Patch Management supports individual policy definitions for downloading and installing patches, so that entire processes can be fully automated and tailored to the company's needs. This also includes scheduled downloading of Microsoft patches, thus deferring data transfers to specific times. Rule-based patch management with enteo v6 also relieves IT administrators of tedious tasks by allowing them to set one desired status without having to interfere manually.

This means, for instance, that all critical Windows XP patches are first of all distributed automatically to all notebooks. The graphical user interface immediately indicates whether the defined status was achieved or not. If necessary, discrepancies can be tracked down all the way to the individual system. IT administrators thus are kept well informed of security compliance and any possible weak points, while the system documents the status for auditing purposes.

# enteo v6 PATCH MANAGEMENT

## Pilot Installation Minimizes Risks

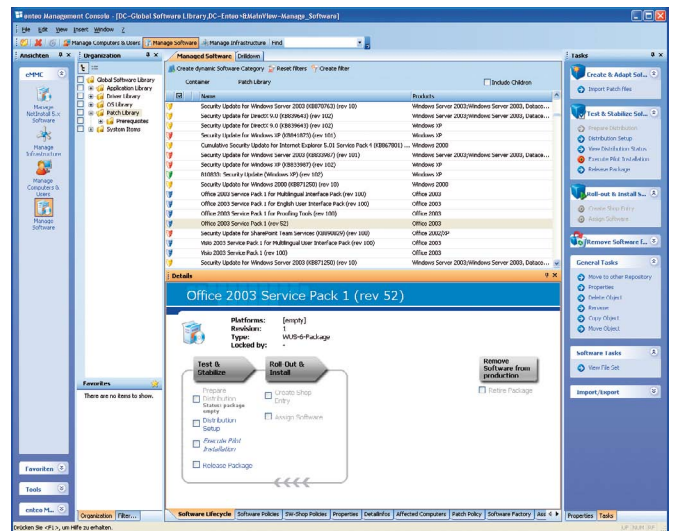
Despite the urgency when installing patches, system stability and availability remain paramount. enteo v6 Patch Management thus supports a controlled change management, whereby all new patches have to prove their harmlessness by being first tested in a pilot installation. enteo v6 only installs a patch on productive PCs if it passes these tests. enteo v6 Patch Management automatically resolves patch dependencies, thus minimizing the number of installations necessary.



Clear representation of potential hazards and compliance for monitoring success

## Key Features

- Extensive selection of security patch products for Microsoft applications and operating systems
- Timed patch catalog synchronization
- Timed patch download
- MBSA/WSUS patch catalog
- Installation via Windows Update Agent (WUA)
- Support of patch revisions
- Display and automatic resolving of patch dependencies
- Automatic identification of incompatibilities
- Vulnerability reports (security state)



Packaging Workbench for standardized and consistent patch processes

## System Requirements:

### Server

Windows 2000 Server SP4 or higher  
Windows 2003 Server  
512 MB Ram (1024 recommended)  
Minimum 500 MB available hard disk storage space  
MSQL 2000 SP3a or higher  
MSDE 2000 SP3a or higher  
IIS 5.0 or higher  
Internet Explorer 5.5 or higher

### Clients

Windows XP  
Windows 2000 SP3 or higher  
Windows 2003

## enteo Software

Germany	+49 711 340 190 0	sales@enteo.com
Alps Region	+41 43 388 40 90	sales.ch@enteo.com
Nordic Region	+46 8 555 409 40	sales.se@enteo.com
UK and Ireland Region	+44 20 7397 8390	sales.uk@enteo.com
North America	+1 847 706 9400	sales.us@enteo.com

Please go to [www.enteo.com](http://www.enteo.com) for more information.